

# Test Mix Standard Experiments:

Operating Conditions:

Semi-Prep: Eclipse XDB-C18 9.4\*250 mm, 5 um

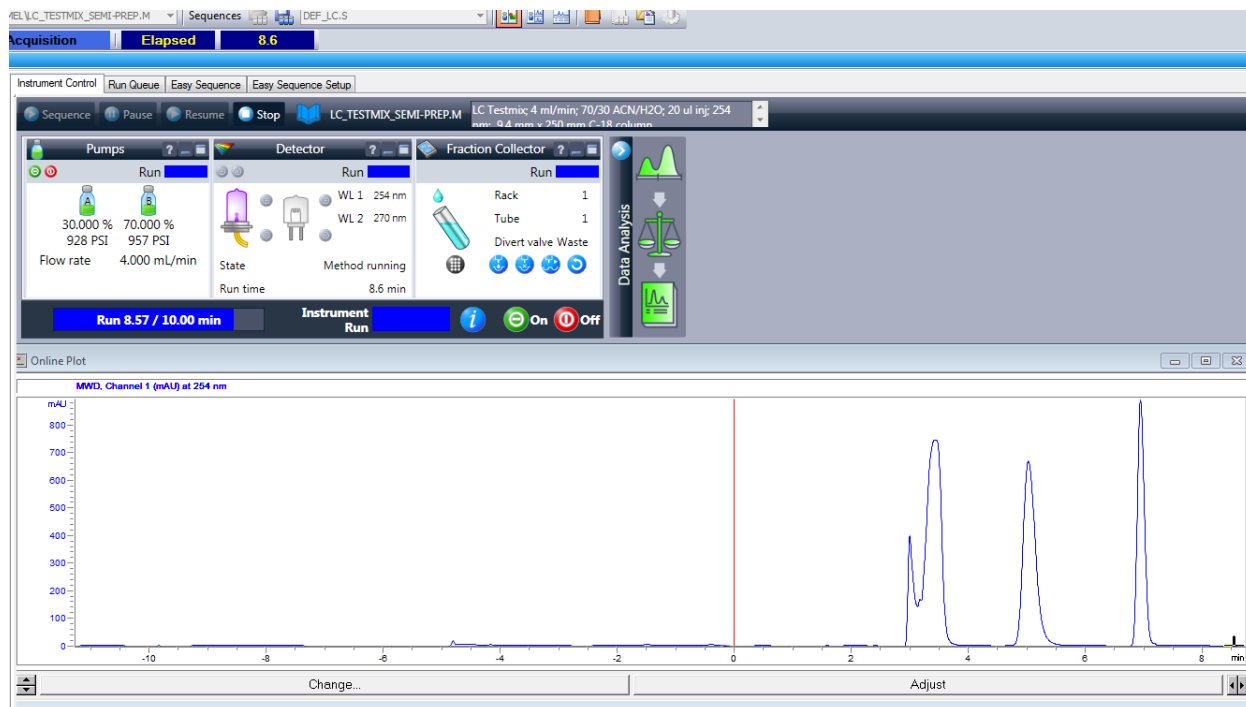
Mobile Phase: 70% Acetonitrile/30% Water

Flow Rate: 4 ml/min

Injection Volume: 50 ul

Column back pressure: 1000 PSI

| Peak# | Conc (ug/ml) | Compound              |
|-------|--------------|-----------------------|
| 1     | 100          | Uracil                |
| 2     | 4000         | Phenol                |
| 3     | 500          | 4-Chloro Nitrobenzene |
| 4     | 800          | Naphthalene           |

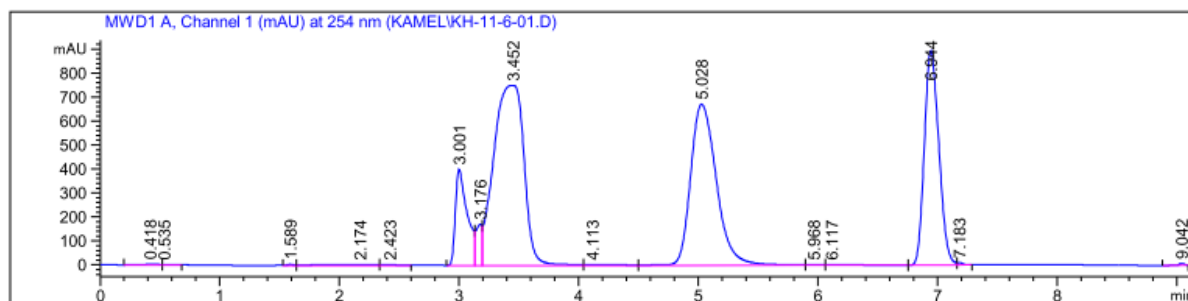


Data File C:\CHEM32\1\DATA\KAMEL\KH-11-6-01.D

Sample Name: testmix-semiprep

```
=====
Acq. Operator   : SYSTEM
Sample Operator : SYSTEM
Acq. Instrument : Prep HPLC                      Location : -
Injection Date  : 11/6/2013 10:11:32 AM
                                           Inj Volume : Manually
Method          : C:\CHEM32\1\METHODS\KAMEL\LC_TESTMIX_SEMI-PREP.M
Last changed    : 11/6/2013 10:06:17 AM by SYSTEM
Method Info     : LC Testmix; 4 ml/min; 70/30 ACN/H2O; 20 ul inj; 254 nm; 9.4 mm x 250 mm C-18 column

Sample Info     : 20 ul injected of testmix
```



Data File C:\CHEM32\1\DATA\KAMEL\KH-11-6-01.D

Sample Name: testmix-semiprep

=====  
Area Percent Report  
=====

Sorted By : Signal  
Multiplier : 1.0000  
Dilution : 1.0000  
Sample Amount: : 20.00000 [ng/ul] (not used in calc.)  
Use Multiplier & Dilution Factor with ISTDs

Signal 1: MWD1 A, Channel 1 (mAU) at 254 nm

| Peak # | RetTime [min] | Type | Width [min] | Area [mAU*s] | Height [mAU] | Area %  |
|--------|---------------|------|-------------|--------------|--------------|---------|
| 1      | 0.418         | BV   | 0.1057      | 30.36943     | 3.90675      | 0.0878  |
| 2      | 0.535         | VB   | 0.0776      | 12.47189     | 2.15286      | 0.0361  |
| 3      | 1.589         | VV   | 0.0571      | 19.64657     | 5.08334      | 0.0568  |
| 4      | 2.174         | VV   | 0.4885      | 125.15381    | 3.12316      | 0.3618  |
| 5      | 2.423         | VV   | 0.1796      | 39.30242     | 3.08592      | 0.1136  |
| 6      | 3.001         | VV   | 0.0977      | 2772.42505   | 400.95438    | 8.0145  |
| 7      | 3.176         | VV   | 0.0507      | 612.84119    | 171.54732    | 1.7716  |
| 8      | 3.452         | VV   | 0.2345      | 1.31466e4    | 749.88831    | 38.0038 |
| 9      | 4.113         | VV   | 0.2348      | 80.03748     | 4.32674      | 0.2314  |
| 10     | 5.028         | VV   | 0.2383      | 1.00962e4    | 672.05432    | 29.1859 |
| 11     | 5.968         | VV   | 0.1184      | 27.24593     | 3.22995      | 0.0788  |
| 12     | 6.117         | VV   | 0.3015      | 56.66071     | 2.30723      | 0.1638  |
| 13     | 6.944         | VV   | 0.1341      | 7516.56787   | 894.24475    | 21.7287 |
| 14     | 7.183         | VB   | 0.0481      | 31.77199     | 9.98686      | 0.0918  |
| 15     | 9.042         | VV   | 0.0494      | 25.50265     | 7.96090      | 0.0737  |

Totals : 3.45928e4 2933.85278

