

LCMS Tuning

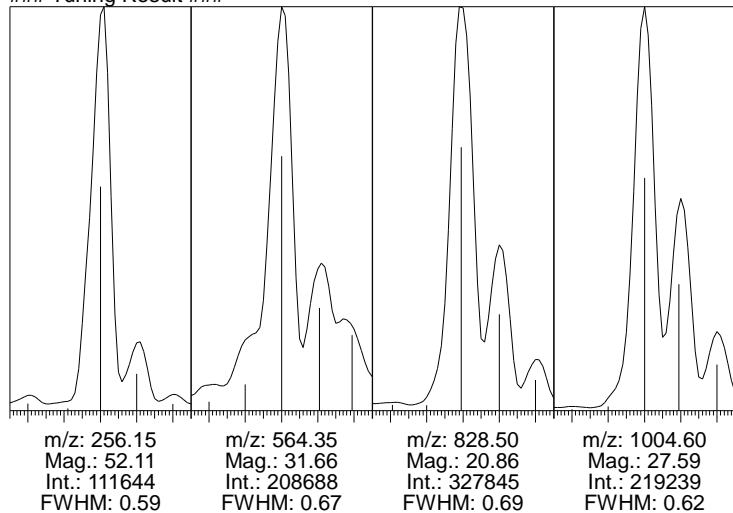
### Sample Information ###

Sample Type: PEG+PPG+Raffinose  
 Auto Tuning Mode: Both

### Tuning Condition ###

Only Positive Tuning: Off  
 Resolution Adjustment: On  
 FWHM of Spectrum(Low): 0.60  
 FWHM of Spectrum(High): 0.60  
 Sensitivity Adjustment: On  
 Mass Calibration: On

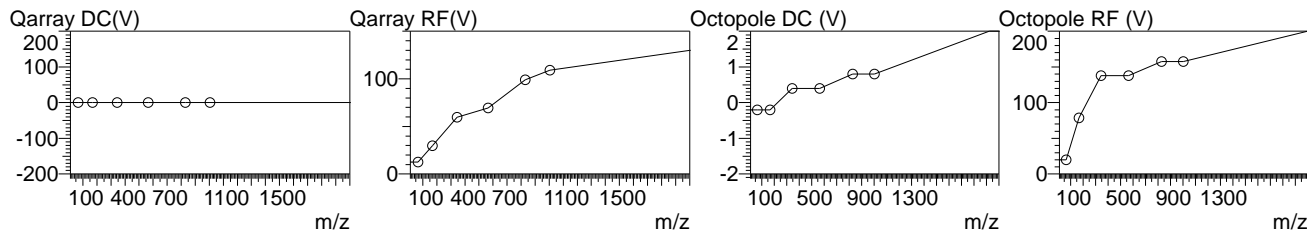
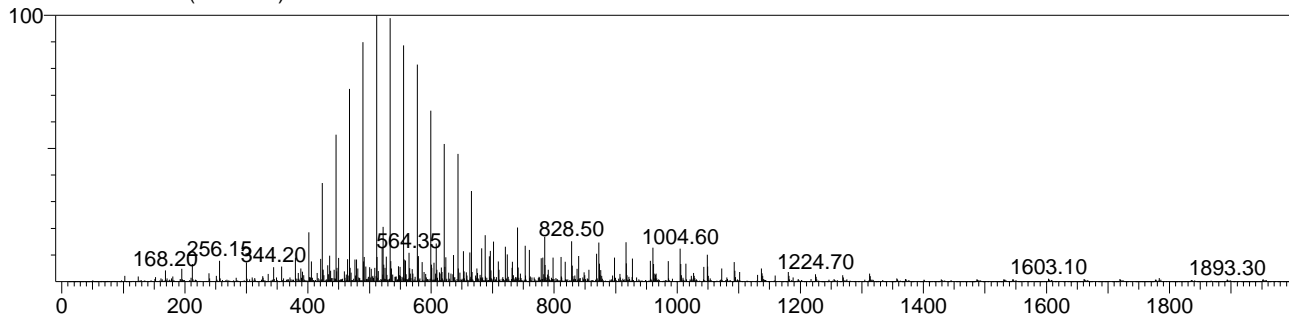
### Tuning Result ###



### Tuning Result ###

Model: LCMS-2020  
 Interface: DUIS  
 Polarity: Pos  
 Tuning Mode: Auto  
 Tuning Date: 2014 Aug 14 11:26:44  
 Nebulizing Gas Flow: 1.50 L/min  
 Drying Gas Flow: 15.00 L/min  
 Interface Bias: +4.50 kV  
 Interface Current: 0.5 uA  
 Heat Block Temp.: 400 C  
 Entrance Lens: -20.0 V  
 RF Gain: 4910  
 RF Offset: 5090  
 Mainrod Bias: -5.0 V  
 Conversion Dynode: -10.0 kV  
 Detector: -1.10 kV  
 PG: 9.9e+001 Pa  
 IG: 6.1e-004 Pa  
 DL Temp.: 250 C

Scan: 10.00 - 2000.00 Scan Speed: 29  
 Base Peak: 511.50(1543593)



	65.05	168.10	344.20	564.35	828.50	1004.60
DL	+0.0	+0.0	+0.0	+0.0	+0.0	+0.0
Qarray DC	+0.0	+0.0	+0.0	+0.0	+0.0	+0.0
Qarray RF	+12.5	+29.9	+59.6	+69.5	+99.2	+109.1
Octopole RF	+19.9	+78.9	+137.9	+137.9	+157.6	+157.6
Octopole DC	-0.2	-0.2	+0.4	+0.4	+0.8	+0.8
Entrance Lens	-25.1	-10.1	-5.2	-5.2	-5.2	-5.2

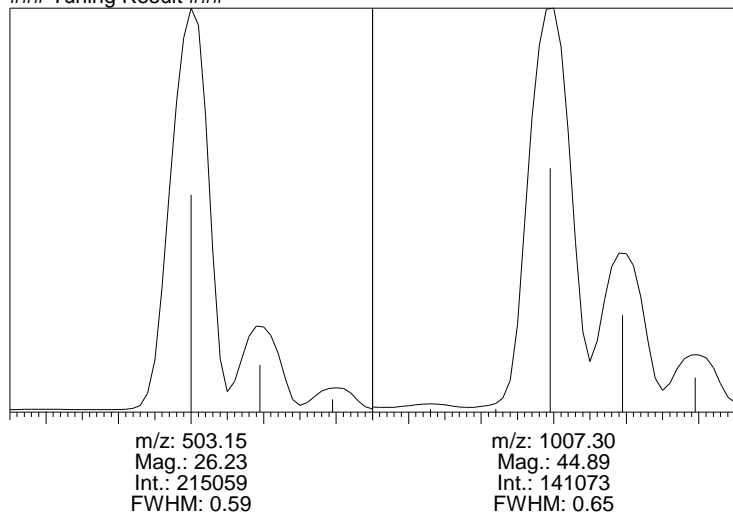
	107.15	1071.50
Prerod Bias	-5.0	-50.0

### Sample Information ###

Sample Type: PEG+PPG+Raffinose  
 Auto Tuning Mode: Both

### Tuning Condition ###  
 Only Positive Tuning: Off  
 Resolution Adjustment: On  
 FWHM of Spectrum(Low): 0.60  
 FWHM of Spectrum(High): 0.60  
 Sensitivity Adjustment: On  
 Mass Calibration: On

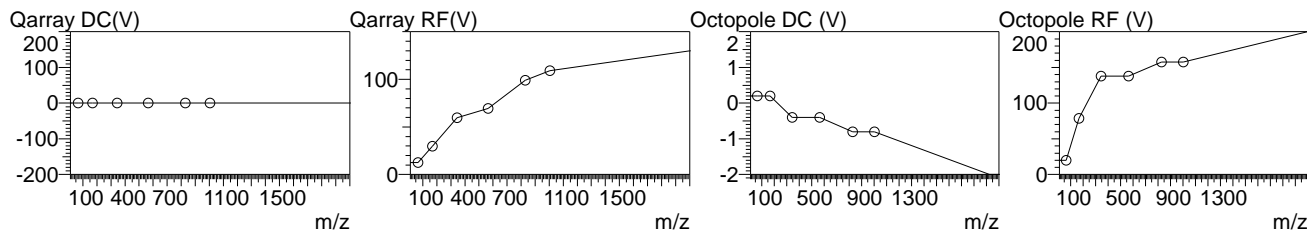
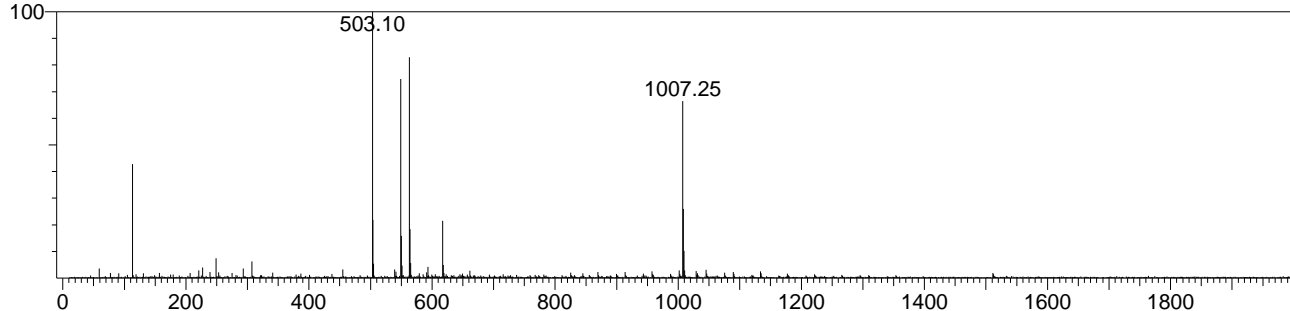
### Tuning Result ###



### Tuning Result ###

Model: LCMS-2020  
 Interface: DUIS  
 Polarity: Neg  
 Tuning Mode: Auto  
 Tuning Date: 2014 Aug 14 11:34:45  
 Nebulizing Gas Flow: 1.50 L/min  
 Drying Gas Flow: 15.00 L/min  
 Interface Bias: -3.50 kV  
 Interface Current: 0.5 uA  
 Heat Block Temp.: 400 C  
 Entrance Lens: +20.0 V  
 RF Gain: 4948  
 RF Offset: 5123  
 Mainrod Bias: +5.0 V  
 Conversion Dynode: +10.0 kV  
 Detector: -1.00 kV  
 PG: 9.8e+001 Pa  
 IG: 6.1e-004 Pa  
 DL Temp.: 250 C

Scan: 10.00 - 2000.00 Scan Speed: 29  
 Base Peak: 503.10(193109)



	65.05	168.10	344.20	564.35	828.50	1004.60
DL	+0.0	+0.0	+0.0	+0.0	+0.0	+0.0
Qarray DC	+0.0	+0.0	+0.0	+0.0	+0.0	+0.0
Qarray RF	+12.5	+29.9	+59.6	+69.5	+99.2	+109.1
Octopole RF	+19.9	+78.9	+137.9	+137.9	+157.6	+157.6
Octopole DC	+0.2	+0.2	-0.4	-0.4	-0.8	-0.8
Entrance Lens	+25.1	+10.1	+5.2	+5.2	+5.2	+5.2

	107.15	1071.50
Prerod Bias	+5.0	+50.0