

## Installing Proteus Software 07/02/14

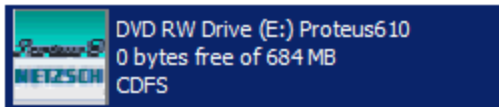
This software is only to be installed on ISU-owned computers. Do not install this software on your personally owned computer.

This software is ONLY to be used to process data acquired on the STA449F1 instrument located in 1238 Hach Hall.

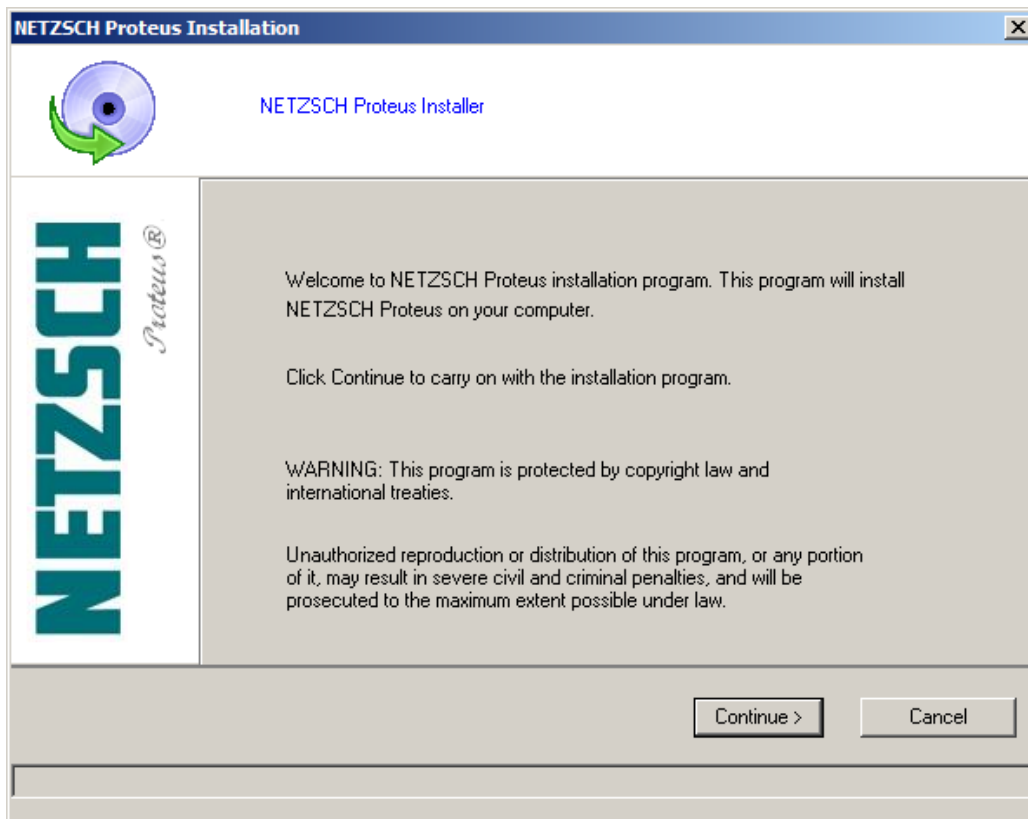
You may not copy, loan or transfer this software to anyone else. Researchers wishing to load this software on an ISU-owned computer must obtain the disk and memory stick from Steve Veysey, 1234 Hach Hall.

\*\*\*\*\*

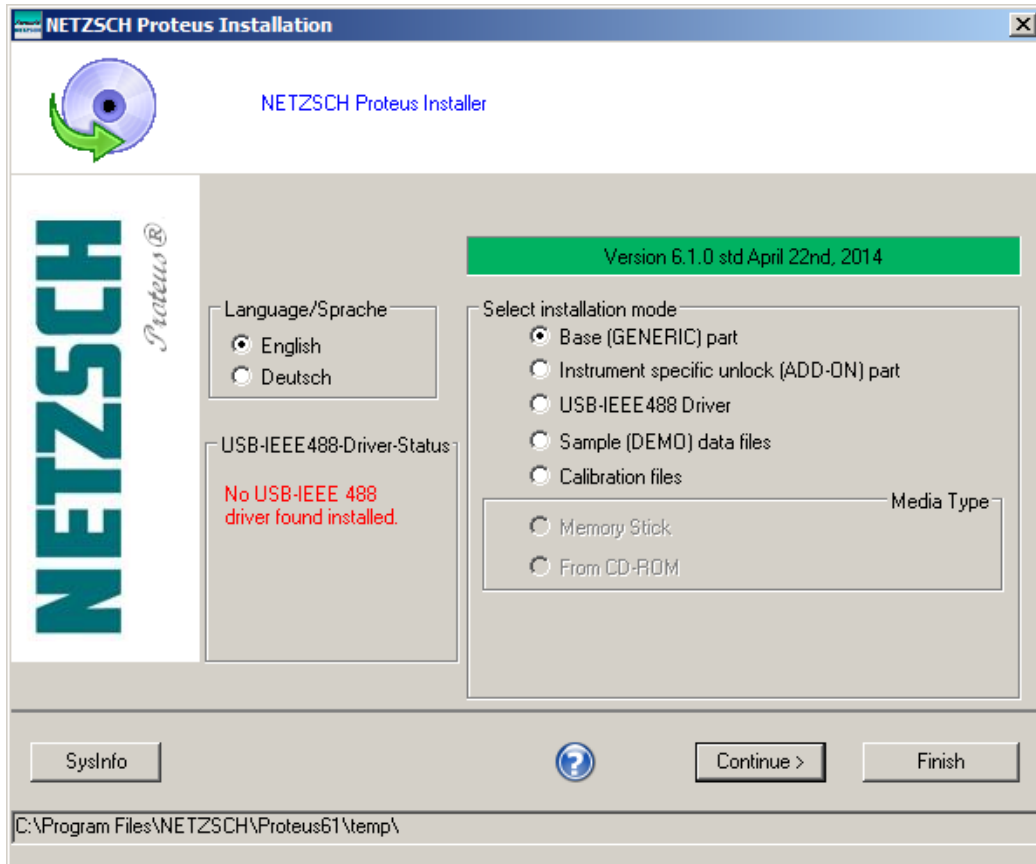
Insert the Proteus Software CD. If autorun is enabled, the software installer will start. Otherwise, click on the CD icon or open the CD contents and select install.exe.



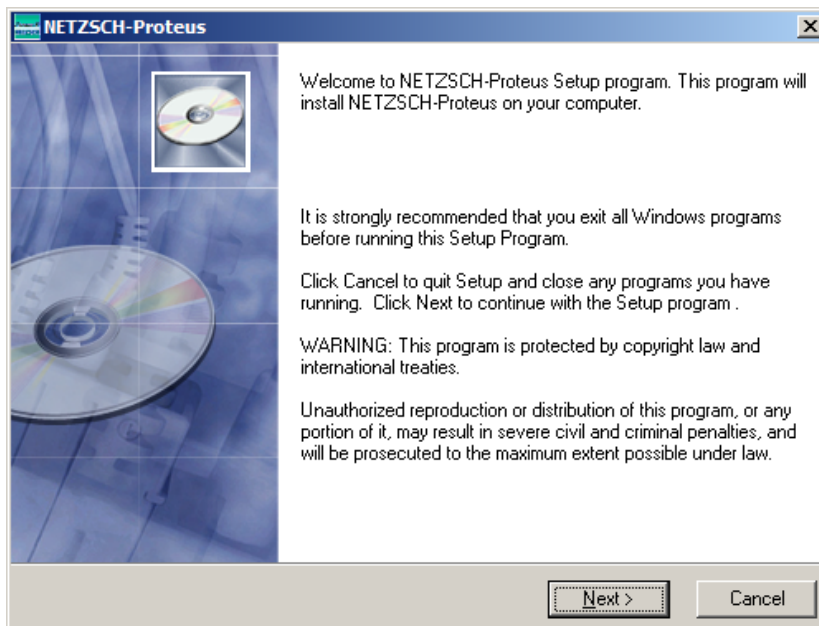
You should see the Proteus Installer welcome view. Select CONTINUE.



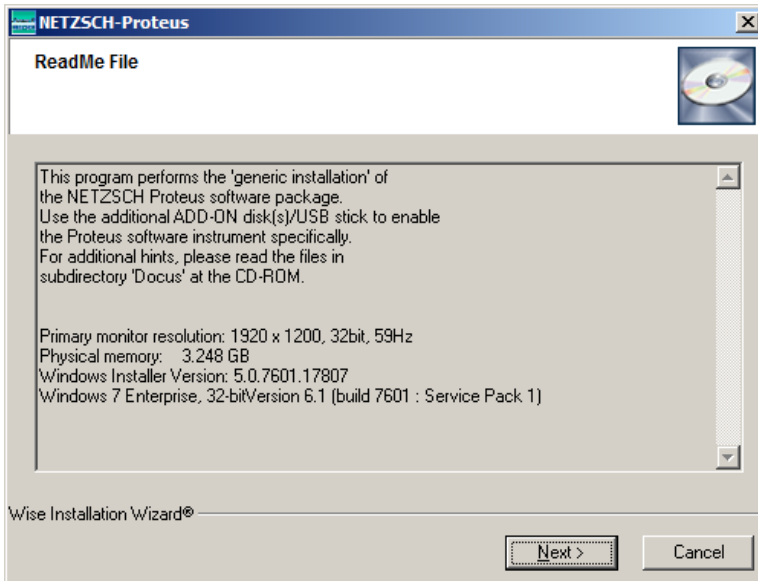
You should see the “Select Installation Mode” view. You will be installing the software in two steps. First, choose “Base [GENERIC] part”, and select CONTINUE.



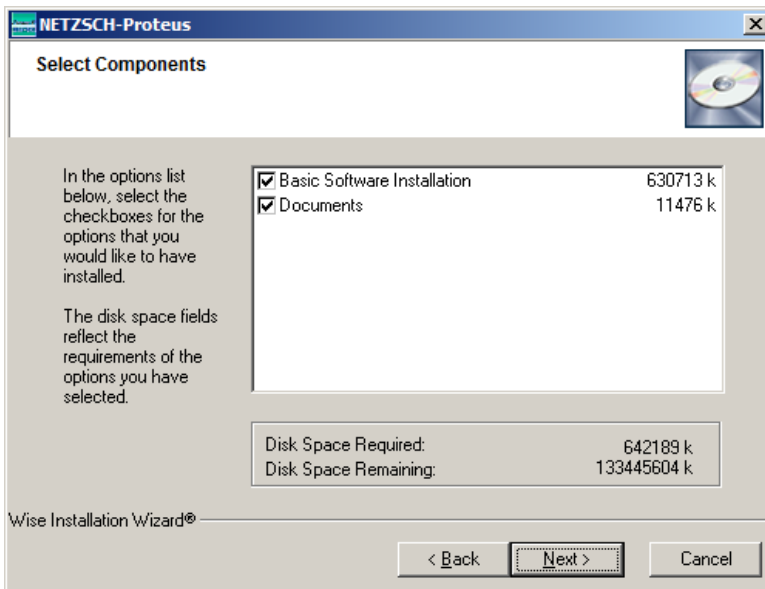
You should see the following view. You are recommended to exit other programs. Select NEXT.



You should see a Read Me file telling you that the generic part of Proteus will be installed. Select NEXT.

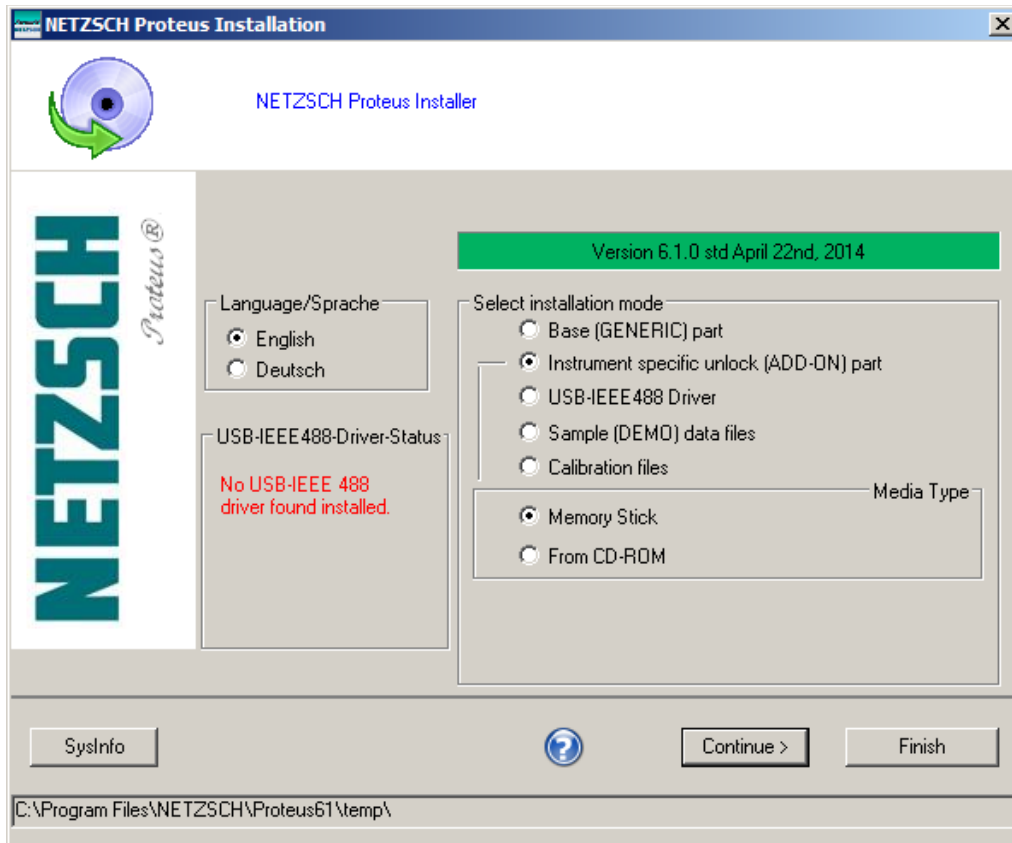


You should see the Select Components view. Choose both “Basic software” and “Documents”, then select NEXT.

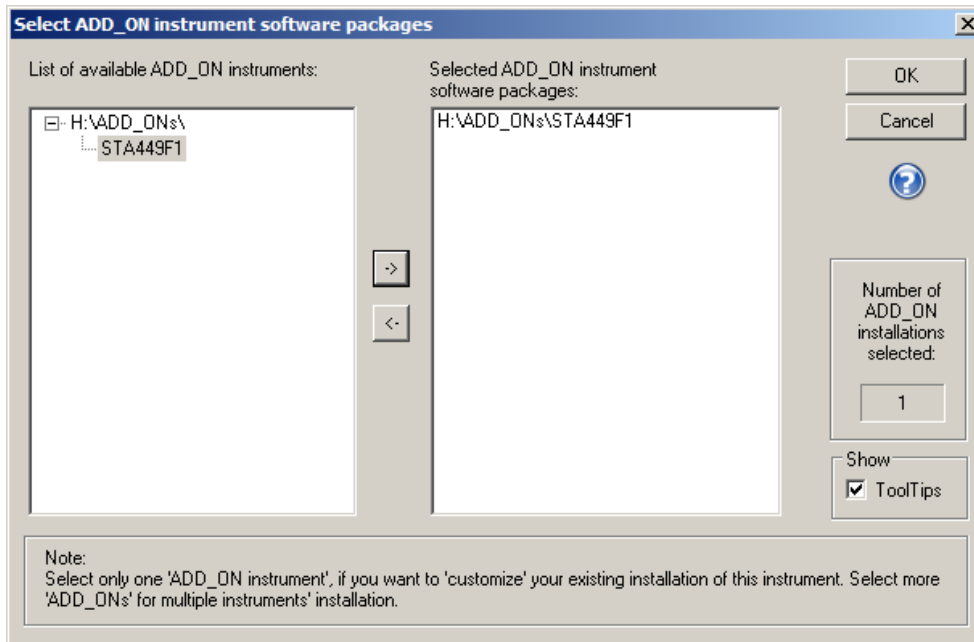


The software will begin to install. There will be a progress bar, et cetera. When this part of the software has been completely installed, you should be returned to the “Select Installation Mode” view.

Select “Instrument specific unlock [ADD-ON] part”, and select “Memory Stick”.



Before (or after) selecting CONTINUE, insert the USB memory stick labeled “ADD-ON for STA 449 F1 ASC”. Depending upon when you insert it, you might see a message prompting you to insert it. The “Select ADD\_ON instrument software packages” view should appear. Select STA449F1 and use -> to move it to right-hand column.



Select OK. The software should begin to install, showing progress messages and views similar to those you saw when you installed the first part of the software.

When the installation is complete, you will be asked to enable a reboot of the computer. **NOTE: You might see a prompt to remove the memory stick from the USB port. Remove it, and then select OK. If the “Remove Memory Stick” dialog box won’t seem to respond to you (as happened to me), just <Cntr-Alt-Del> and select “reboot the computer”. Everything should be fine.**



A Netzsch folder icon should appear on your desktop. Opening this folder should show the following programs:

Name ^	Date modified	Type	Size
Autosampler	7/2/2014 4:22 PM	Shortcut	3 KB
NGB_Tile	6/9/2014 1:26 PM	Shortcut	3 KB
Proteus Analysis	7/2/2014 4:22 PM	Shortcut	3 KB
RemoteAccessSetup	7/2/2014 4:22 PM	Shortcut	3 KB
Selection of Language	7/2/2014 4:22 PM	Shortcut	3 KB
SensitivityCalibration	7/2/2014 4:22 PM	Shortcut	3 KB
ServiceTools	7/2/2014 4:22 PM	Shortcut	3 KB
STA 449F1 on USBc 1	7/2/2014 4:22 PM	Shortcut	3 KB
System-Flasher	7/2/2014 4:22 PM	Shortcut	3 KB
Teach_ASC	7/2/2014 4:22 PM	Shortcut	3 KB
TemperatureCalibration	7/2/2014 4:22 PM	Shortcut	3 KB

Select “Proteus Analysis” and verify that the software is working.

Return the CD, memory stick, and installation binder to Steve Veysey, 1234 Hach Hall.

**NOTE: If you do not have an internal CD drive, we have an external CD drive with USB connection that you may borrow.**

**NOTE: If you are installing on a Macintosh computer, you will probably need a “dual boot” configuration that allows you to run Windows 7 OS. I can’t offer any other advice at this time.**